

GENOME AND PROTEIN ENGINEERING TO STUDY RNA BIOLOGY IN CANCER

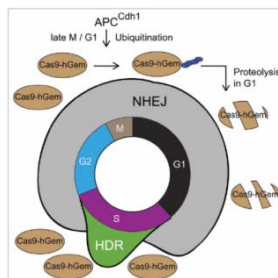
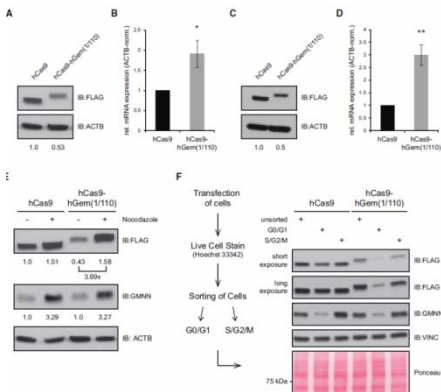
GUEST LECTURE by



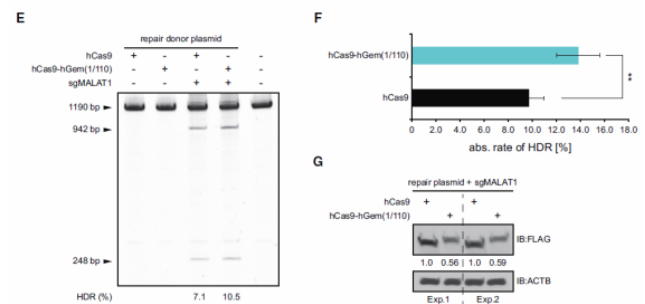
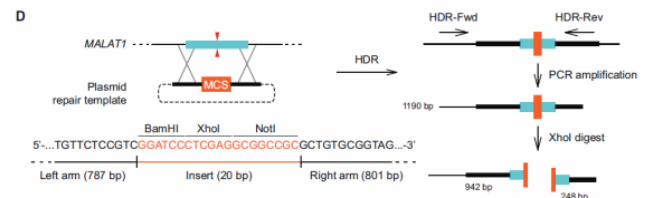
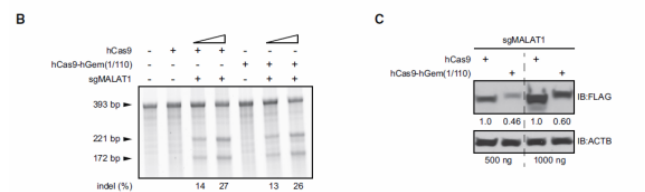
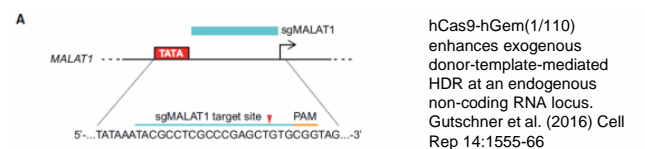
Prof. Dr. Tony Gutschner
Research group 'RNA-Biology and Pathogenesis', Faculty of Medicine, Martin-Luther-University Halle-Wittenberg, Halle an der Saale, Germany

Wednesday, 24.05.2017
16:00

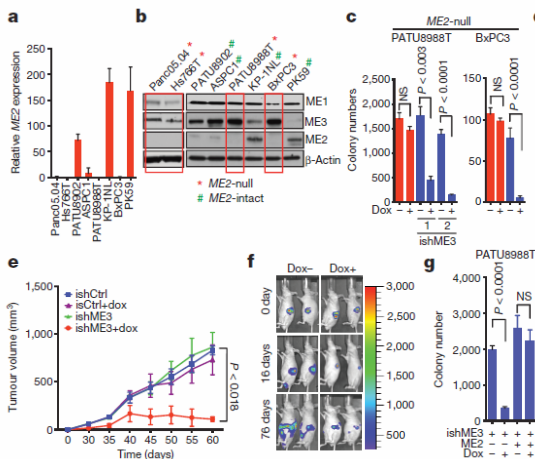
Lecture Hall, Department of Pathology, MUG
(Auenbruggerplatz 25, ground floor)



A cell-cycle tailored genome editing system to enhance HDR. Gutschner & Chin (2016) Cell Cycle 15(11):1395-96



Cell-cycle-tailored expression of hCas9-hGem(1/110). Gutschner et al. (2016) Cell Rep 14:1555-66



Depletion of ME3 leads to collateral lethality in ME2-null PDAC cells. Dey et al. (2017) Nature 542:119-23